

CATALINA

TRAIL BLAZER



Training Manual

2025 Model Year Product

Table of Contents

All pages are hyperlinked below for direct link to that page

- [BAL 5.3 Auto Level!!!](#)
- [New Front Radius Lighting](#)
- [Heat Pump Info for GE AC Units](#)
- [GE Kitchen Appliances](#)
- [GE Refrigerator](#)
- [JBL Premium Sound System](#)
- [MORyde Safe-T Rail and Solid Entry Steps](#)
- [Power Awning w/Multi-color LED Strip Lighting](#)
- [Ramp Door & Ramp Patio System](#)
- [HappiJac Bedlift System & Garage Roll Over Sofas](#)
- [1,500lb. Tie Downs & 15' Toy Lock Cable](#)
- [Optional 200-Watt Solar Panel](#)
- [Optional 30 Amp Solar Charge Controller](#)
- [Sit, Lounge, Sleep Standard Bi-fold Sofa](#)
- [Upgraded Dinette Features](#)
- [Upgraded Kitchen/Living Room Features](#)
- [Upgraded Bedroom Features](#)
- [Stable Deck Tongue and Groove Flooring](#)
- [Screwed Cabinetry Construction & Benefits](#)
- [Seamless Counter Tops Construction & Benefits](#)
- [Black Tank Flush](#)
- [Rear Ladder Prep](#)
- [BAL NXG Frame](#)
- [NXG Through Frame Slide Out](#)
- [Enclosed Underbelly](#)
- [Aluminum Wheels and Aluminum Fender Skirts](#)
- [Gas/Electric Water Heater & Furnace](#)
- [Additional Exterior Value Features](#)

FLOOR PLAN GUIDES:

- [18TH](#)
- [26TH](#)
- [27THS](#)
- [28THS](#)
- [29THS](#)

CATALINA

LEGACY EDITION

BAL 5.3 Auto Leveling System

FREE feature for limited time!

Limited to fall program orders only. Talk to your sales managers for more information!



Click for downloadable
PDF

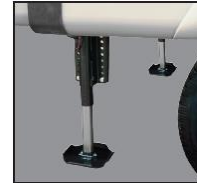


“Press OK and Walk Away!”

Hassle Free Leveling and Camping Faster



Fully interactive touch screen



5 points of contact ensure the most complete leveling experience

Auto Level Commercial!

[Click Here or below.](#)



Key Features:

- ✓ Consistently levels and stabilizes the unit.
- ✓ 5 points of contact ensures the most level and stable camping experience.
- ✓ Auto reconnect and hitch height memory allows for hassle-free hookup to vehicle.
- ✓ User-friendly tongue jack touchpad w/LED lighting and locking lid.
- ✓ Large footpads w/Telescopic drop legs

[Back To Table of Contents. Click Here](#)

Exclusive Front Radius Lighting

FREE feature for limited time!

Limited to fall program orders only. Talk to your sales managers for more information!



“See The Difference”

[Click Here](#) or below.

SOMETIMES YOU HAVE TO
SEE THE DIFFERENCE
TO BELIEVE IT

- ✓ White LED radius lighting adds an upscale touch to the new graphics package for 2025 Catalina model.
- ✓ On/Off switch located in the pass-through storage.
- ✓ Show off your new Catalina and illuminate your campsite!

[Back To Table of Contents. Click Here](#)

Heat Pump STANDARD in All A/C's

*Powerful, reliable cooling performance
Engineered to deliver comfort, quality and long-lasting durability.*

INDUSTRY LEADING HEAT PUMP PERFORMANCE



HEAT PUMP + FURNACE

Extends Propane Usage Between 19-38% at 35° F Outdoor Temp*

In heat pump mode the RV's AC is working in reverse. Heat from the outside is utilized to supplement the furnace.

**Based on a propane furnace ranging from 20-40,000 BTU with 75% efficiency.*



AUTO CHANGEOVER HEAT PUMP

When the outdoor temperature drops below 25° F the heat mode automatically engages auxiliary heating sources, e.g., an RV furnace (if the RV is so equipped) to provide optimal comfort.



HEAT PUMP OPERATION AS LOW AS 25° F

This feature ensures that any ice buildup on the heat exchanger is cleared by periodically cycling to Auto Defrost. With the reverse cycle defrost algorithm, the heat pump can continue to provide supplement heating with outdoor temperatures as low as 25° F.



MULTIPLE HEATING MODES

3 heating modes available: heat pump only, heat pump + furnace, and furnace only. Flexible heating mode gives RVs more options to configure the ideal comfort setting and provide the ability to set a preferred automatic setting.



HIGH-EFFICIENCY RVAC

Using large heat exchangers along with high efficient compressors, allow RV owners to install up to 3 AC units on one 50-amp equipped RV. In addition, owners can install more electronic equipment without overloading the electrical circuits.



Models include cool only, heat pump & high-efficiency cool only

How it works:

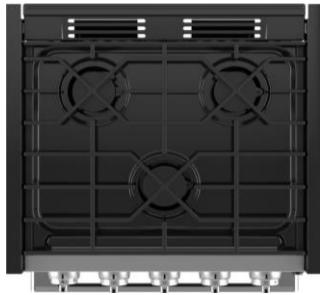
The AC process is reversed. Heat is pushed through the ducting and cold air is vented outside.

Key Features:

- ✓ Electric heating source that extends propane usage between 19-38% at 35°F.
- ✓ Operates as low as 25°F outside temp.
- ✓ All heat modes are controlled through the wall mounted thermostat for each AC unit.
 - Heat pump only
 - Heat pump + Furnace
 - Furnace only



GE APPLIANCES
a Haier company



GE® 17" RV Gas Range, Oven, Vented Range Hood, and Microwave

Range & Oven Features Include:

- ✓ **Edge-to-Edge Grates** – Easily move cookware on this seamless surface cooktop with continuous black matte grates.
- ✓ **Easy-Clean Enamel Oven** – The smooth enamel surface makes it difficult for grease and other dirt to stick to it.
- ✓ **Spark Ignition System** – Easily light each burner by turning on the burner a creating a spark with the spark ignition knob
- ✓ **Cast Metal, White Backlit, Range Knobs** – Heavy cast metal knobs offer durability with a high-end look. White backlit range knobs can be conveniently turned on and off.
- ✓ **Nickle Oven Rack w/Multiple Positions** – 2 flexible oven rack positions to accommodate a variety of cookware.

Range Hood & Microwave Features Include:

- ✓ **Watts & Power Levels** – This is a 900W microwave is on the high end of the wattage spectrum for its size. It also comes with 10 power levels!
- ✓ **Convenience Cooking Controls** – 7 convenient easy cook modes like popcorn and reheat buttons.
- ✓ **Instant On Controls** – Instantly set the timer between 1-6 minutes with the press of the instant on control button.
- ✓ **Filtered and Ducted Range Hood** – Fumes and odors are vented outside of your RV. The aluminum mesh filter can be easily washed under water!



GE APPLIANCES
a Haier company



GE® 9.8 Cu. Ft. 12 Volt DC Power Top-Freezer Refrigerator

Features Include:

- ✓ **Semi-Automatic Defrost** – designed to save energy and improve battery performance.
- ✓ **Deep Freezer w/ a Shelf** – Accommodates larger items; even a bag of ice.
- ✓ **Adjustable Glass Fridge Shelves** – Two adjustable shelves to organize food storages.
- ✓ **Door Bins/Storage** – Frees up shelf space in the fridge & freezer.
- ✓ **Clear Crisper Drawer** – Helps preserve fresh fruits and vegetables.
- ✓ **LED Lighting** – Energy efficient and bright.
- ✓ **Compressor Cooling System** – No external ventilation required.
- ✓ **12V DC Power** – Specifically engineered for the RV and boat industries.

Differentiation Benefit: Wall Switch for the Refrigerator

- ✓ Catalina wires our 12V refrigerators to a switch located next to the refrigerator giving the owner the ability to turn off the refrigerator completely

****The 12V refer is a standard build item.** Catalina offers a 7 cu. Ft. gas/electric RV refer as an **option**.



The Benefits:

- ✓ 2 Zones of Audio Control with dual zone control.
 - Have the TV/Radio playing through interior speakers (zone A) with a Bluetooth device playing on the outside speakers (zone B).
- ✓ Bluetooth Connectivity.
- ✓ FM Tuner with 10 Presets.
- ✓ HDMI ARC Cable Installed to Connect to TV (Yellow HDMI Plug).
- ✓ Parametric Lighting with 3 Different Light Modes.
- ✓ Interior JBL Speakers Specifically Paired for Optimal Sound.
- ✓ Exterior Speakers Specifically Paired for Optimal Sound.

Differentiation Benefit: Name Brand Sound System

- ✓ Catalina uses the JBP Premium Sound System. Very few other brands in our segment even know what sound equipment they are using!



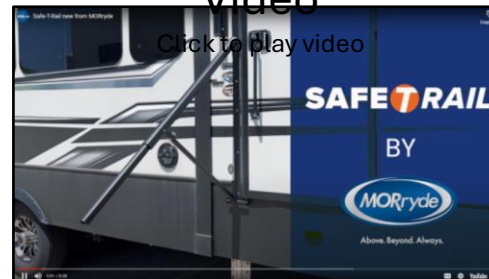
MORryde Safe-T-Rail & Entry Steps



Key Features:

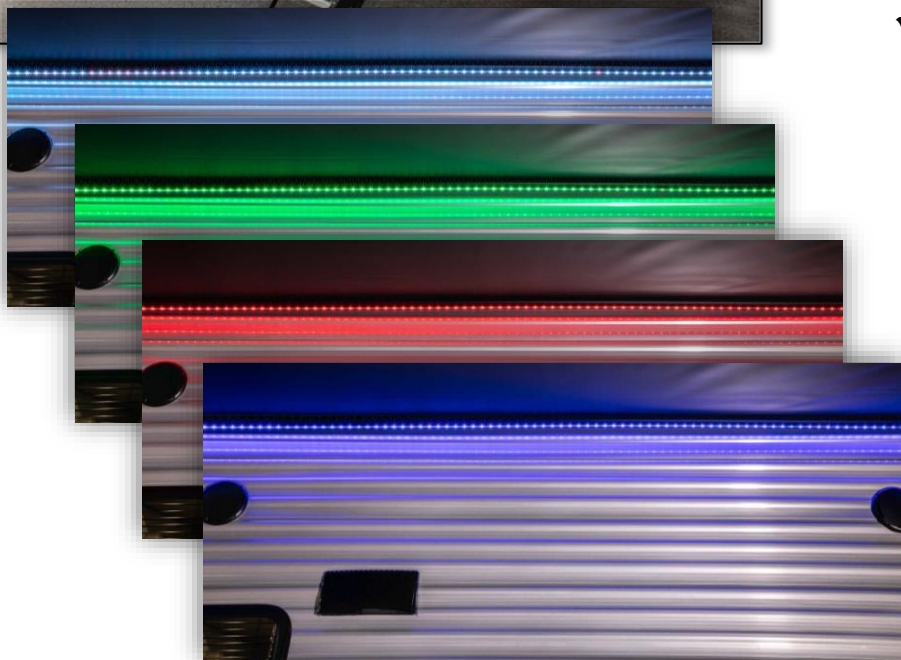
- ✓ 54" of continuous rail surface.
- ✓ Safer and easier to enter and exit your trailer.
- ✓ Wide top step for safety.
- ✓ Redesigned gradual step slope for full foot placement.
- ✓ Stable entry to and exit from your trailer.
- ✓ Lightweight and easy to set up and stow.
- ✓ Quick release leg adjustments. No pins!
- ✓ Steps have a 500lb. weight capacity.

Safe-T-Rail Vendor Video



Entry Steps Vendor Video





Multi-Colored LED Lighted Power Awning

Key Features:

- ✓ **No Hassle Power Awning** – *push button on the OneControl board, or open with your OneControl app!*
- ✓ **Heavy Duty Vinyl Fabric** – *Anti-mildew, Anti-scuff, and cold-crack tested.*
- ✓ **Adjustable Pitch** – *Pitch control on each arm allows for better sun blocking coverage. It also helps avoid pooling water!*
- ✓ **8' Extension** – *Solera Awnings extend out 8 ft. for plenty of camp site shade coverage.*
- ✓ **Multi-Color LED Light Strip w/Remote**

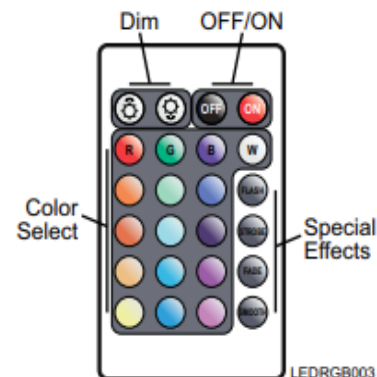
– *Provides 15 different colors + white. Also includes features such as strobe, flash, fade, or smooth transition between*

Select OEMs may offer RGB (color) LEDs.

These lights use a separate IR (Infrared) remote and sensor. The top of the remote must be pointed at the infrared sensor on the LED receiver module.

The remote control provides:

- Simple push button on/off
- Adjustable dimming
- 15 color choices + white
- Special effects (flash, strobe, fade and smooth)



CATALINA

TRAIL BLAZER

Ramp Door & Optional Patio System

Key Features:

- ✓ 3,000lbs. Ramp load capacity.
 - 1,000lbs per wheel contact
- ✓ 1,500lbs. Ramp patio capacity.
- ✓ Ramp door doubles as usable camping space!
 - Add additional 40+ sq. ft. of space.
- ✓ Patio system stows onto the door.
- ✓ Set up takes less than 60 seconds.
- ✓ Patio rails double as guide rails when ramp is in loading position.
- ✓ Locking patio door for quick patio exit/entrance *(steps sold after market)*.
- ✓ Roll Down Screen Wall/Tent Wall
 - Waterproof material
 - Large screen windows for air flow
 - Roll down window covers for



[Check Out Our Video!](#)
[Click Here](#)



[Back To Table of Contents](#) [Click Here](#)



HappiJac Bed Lift Standard In:

- 27THS — *Two Oversized Double Beds*
- 28THS — *Top Queen Bed, Bottom Opposing Sofas that makes second bed*

Benefits:

- ✓ Creates maximum storage space while offering additional uses for the garage space.
- ✓ Multiple configurations for whatever needs the customer has.
- ✓ No Pins! Push bottom operation with easy to access levers designed to release or lock top bunk in place

HappiJac Bed Lift System & Roll Over Garage Sofas



Roll Over Sofa Standard In:

- 26TH
- 29TH

Benefits:

- ✓ More comfortable than some competitor's "homemade" benches
- ✓ Multi-use as single sofa, dinette, double sofa's and a bedx
- ✓ Easy to stow against the wall to gain maximum garage space.

1,500lb. Frame Mounted Tie Downs & 15' Toylok Anti-Theft Device



Number of tie downs per floor plan:

26TH – 10 tie downs

27THS – 6 tie downs

28THS – 10 tie downs

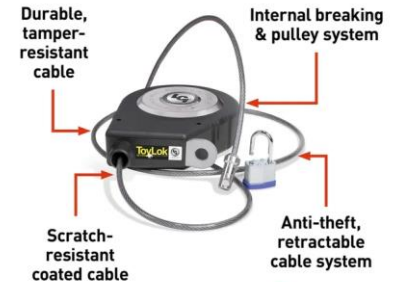
29THS – 13 tie downs

Key Features:

- ✓ Screwed into the frame for maximum strength.
- ✓ 1,500lb. Rating for each tie down.
- ✓ Abundant tie downs per floor plan.



FEATURES & BENEFITS



LIPPERT

Key Features:

- ✓ 15' of PVC coated, anti-abrasion cable
- ✓ Internal pulley system to choose optimum length.
- ✓ 8,000lb. Rated cable.
- ✓ Retractable pulley system to stow away.
- ✓ Bolted to the frame for tamper proofing.

[Back To Table of Contents. Click Here](#)

Go Power! 200 Watt Solar Panel

All Catalina's are wired and prepped for solar capabilities. The panel and charge controller is an optional add from the factory.

RELIABLE POWER, ANYWHERE



SPECIFICATIONS

Rated power (Pm)	200W
Maximum power voltage (Vmp)	20.8V
Maximum power current (Imp)	9.62A
Open circuit voltage (Voc)	24.3V
Short circuit current (Isc)	10.09A
Power coefficient	-0.39% / °C
Voltage coefficient	-0.31% / °C
Current coefficient	0.045% / °C
Max power tolerance	+/- 5W
Cell type	Monocrystalline
Module efficiency	21.5%
Series fuse rating	15A
Maximum system voltage	600VDC (UL / IEC)
Weight	26.4 lb (12 kg)
Dimensions	59.06 x 26.3 x 1.57 in 1500 x 668 x 40 mm
Materials	Clear anodized aluminum frame; tempered glass
Warranty (Power Output)	25 years

Power Specifications calculated at STC:
• Irradiance: 1000 W/m²
• Cell Temperature: 77 °F (25 °C)
• Air Mass: 1.5

Key Benefits:

- ✓ Produces 9.6 amps of power charging capability, per hour, under standard solar conditions.
- ✓ Capable of running a 12V refrigerator.
- ✓ Monocrystalline power cells for higher efficiency.
- ✓ Industry standard quick connect cables.
- ✓ 25-year limited solar panel output power warranty.

[Back To Table of Contents. Click Here](#)

Go Power! 30 Amp Bluetooth Solar Charge Controller



Key Benefits:

- ✓ Capable of handling up to **600 watts of solar power.**
- ✓ **Bluetooth® ready** with the Go Power! Connect app.
 - Set the battery type and charging profile
 - Turn your compatible Go Power! ISW Inverter on or off
 - Toggle Maximum Power Boost mode
 - View essential battery stats, including:
 - Battery Voltage
 - PV Charging Current
 - Battery State of Charge (SOC)
- ✓ **Regulates current flow** from your solar modules to your batteries.
- ✓ Temperature compensated pulse width modulation (PWM) charging.
- ✓ 4 battery charging profiles: Sealed/Gel, AGM, Flooded and LiFePO4 (lithium).
- ✓ 4 stage charging: Bulk, Absorption, Float and Equalize.
- ✓ Back lit LCD screen displays charging current, battery voltage and battery state of charge.
- ✓ Built-in USB charge port.
- ✓ Heavy-duty terminals for low resistance connections.
- ✓ Suitable for 12V solar systems up to 30 amps.
- ✓ 5-year warranty.

Solar Sizing
Worksheet
Click PDF →



[Back To Table of Contents. Click Here](#)

GP-SB-PWM-30BT SPECIFICATIONS	
Nominal System Voltage	12V
Nominal Charge Current	30A
Battery Voltage Range	6V -- 16Vdc
Max Battery Charge Current	37.5A
Max Solar Power	600W
Display Consumption	15mA
Temp. Compensation	- 25mV/°C
Operating Temperature	- 40 to 60°C / - 40 to 140°F
Humidity	99% N.C.
Dimensions (H x W x D):	5.87 x 3.86 x 1.26 in; 149 x 98 x 32 mm
Weight	260 g / 9.2 oz
Maximum Wire Gauge:	#8 AWG/10 mm²
Warranty	5 years
Protection	Battery/Solar Reverse Polarity, Battery/Solar Short Circuit, Battery/Solar Reverse Current, Battery/Solar Over voltage up to 50V, Over temperature, Over Current

New, Standard, SLS Sofa (Sit-Lounge-Sleep)



SIT



LOUNGE



SLEEP

Features Include:

- ✓ **Modern, Residential Inspired Style & Design**
 - Residential inspired styling with arm rests and overstuffed cushions.
 - Cup holders for convenience.
- ✓ **Versatility & Durability**
 - Use it as a sofa, a chaise lounge, or an additional bed!
 - Built with high quality, breathable, "leatherette" vinyl that is easy to clean and rugged!
- ✓ **Additional Storage (see picture to the left)**
 - Easy access to the storage area!
 - Finished storage, so belongings are not lying on the floor.

**New Furniture Option Available: Theater Seating!*



[Check Out Our Video! Click Here](#)



[Back To Table of Contents. Click Here](#)

Upgraded Dinette Features



Key Features:

- ✓ **Camco blocks** added in place of the wood stiles for table support when in bed mode.
- ✓ U-shape dinette **back bench storage opened** for easy access. Includes storage totes!
- ✓ **Velcro strip dinette cushions** to keep cushions in place every time.
- ✓ Thermofoil dinette tabletop is seamless. Making in longer lasting and moisture proof, unlike t-mold or self edge tabletops that contract over time leaving gaps.
- ✓ Easy access storage doors under the bench seats!



Additional Kitchen/Living Room Convenience Features



Key Features:

- ✓ **NEW High-pressure glass rinser** to quickly wash out your favorite tumbler.
- ✓ **Drying rack** that fits over the sink but can be rolled up and put away when it's not needed.
- ✓ **Paper towel holder** in a convenient location keeping the paper towels off valuable countertop space.
- ✓ **Dimmer Switch** for main living room lighting



Upgraded Bedroom Features

Key Features:

- ✓ **NEW Rear wardrobe shelf/cubby** adds convenient, easy access, storage at the head of the bed.
- ✓ **Full length nightstands** opens the area next to the bed and provides more space.
- ✓ **12V USB/USB C and 110 Outlets** on both sides of the bed to meet the modern worlds power needs.
- ✓ Our under-bed storage is finished off separating the exterior pass-through storage from the interior bed storage.



Engineered Structural Panel Flooring

ADVANTAGES

Travel and outdoor enthusiasts need RVs that can withstand the elements. Our deck panels are precision-engineered specifically for RVs to provide a stronger core, moisture resistance, and more stability for the long haul.

Our sanded 2 sides engineered panels afford the thickness tolerance requirement of components in the most precise applications. Our panels are manufactured with additional resins and wood to deliver extra strength and rigidity where needed. Our product line is manufactured in multiple locations across North America to help reduce customers' transport costs.

All products are CARB (California Air Resource Board) - exempt and free of any urea-formaldehyde resins.



BENEFITS

ESP PLYWOOD OSB

	ESP	PLYWOOD	OSB
Used in Cargo and RV trailers for years	✓	✓	✓
100% MDI Resin for water resistance	✓	✗	✗
Superior anti-swell properties	✓	✗	✗
Sanded two sides so panel remains flat	✓	✗	✗
Formulated for enhanced strength & density	✓	✗	✗
Superior screw-holding	✓	✗	✗
Uniform thickness	✓	✗	✗
One Year Limited Warranty	✓	✗	✗

THICKNESS
5/8" Sanded 2-Sided
LENGTHS
4'x8' 4'x102"
WARRANTY
Limited Warranty

TESTING DATA & COMPARISON

	Density (pcf)	Internal Bond (psi)	Parallel Bending Stiffness (EI parallel)	Perpendicular Bending Stiffness (EI Perpendicular)	Parallel Bending Strength (MM para)	Perpendicular Bending Strength (MM perp)	Thickness Swell (%)	Water Absorption (%)	#10 Screw Pull Through	#12 Screw Pull Through	#14 Screw Pull Through
ESP Engineered Structural Panel	40	118	374,978	195,819	6,166	4,425	4.9	13.9	665	852	1011
Standard OSB	38	263,961	88,326	1,735	1,735	36.1	49.3				
OSP Plywood Testing (Published Data)	36	127	330,000	57,000	2450	850	8.8	45	415	470	525

Manufacturer Test results above represent a random sampling of product produced for Trailer applications - test results will vary from run to run and should not be considered minimum standards. OSB/Plywood numbers are from the APA and other published reports used for engineering values.

Key Features:

- ✓ 100% MDI Resin for water resistance and anti-swelling properties.
- ✓ Sanded 2 sides, free of patches, putty, and other imperfections such as knotholes or core voids.
- ✓ Engineered to lie flat: resistant to twisting, cupping, cracking, warping, and delamination.
- ✓ Engineered with extra strength and rigidity.
- ✓ Superior fastener holding; staples and screws will not work out over time.

The Catalina Cabinet Process



Lumber Core Stiles:

Our construction requires us to use real lumber core stiles, so the screws have something to grip into securely.



Pocket Holes:

Using a jig, we drill precise pocket holes for the screws we use in our construction. This ensures quality and strength every time.



Framing Table:

No guess work! This ensure the right angles and strongest fit for all of our cabinets.

[Check Out Our Video!](#)
[Click Here](#)



X Particle Board

- Not a strong material core material for construction
- Does not stand up to temperature changes and humidity

X Stapled

- Does not offer the same security and hold as screws
- Inconsistent from stile to stile and cabinet to cabinet

X Construction

- Stapled cabinets are often built without the use of a framing table. This creates inconsistencies, gapping and unlevelled cabinets.



[Back To Table of Contents. Click Here](#)

Seamless Thermofoil

Counter Tops

The production process and key quality indicators:

- ✓ CNC routed to specific engineered specs
- ✓ Complete glue coverage preventing separation or gaps
- ✓ Totally seamless coverage of the substrate; no gaps & separation
- ✓ Heat and pressure adherence process for a smooth high-quality finish
- ✓ Hand trimmed to prevent damage and ensure quality coverage

At Catalina we use our thermofoil counter tops in:

- ✓ The Kitchen/Galley
- ✓ Dinettes
- ✓ Camp Kitchens
- ✓ Bathrooms

**AVOID
THIS!**



Correct material is selected and loaded, then parts are cut by our CNC routers, automatically switching between tools for desired finished appearance.



After parts are cleaned of debris, they are moved to the glue department. Surfaces that require vinyl are sprayed evenly and thoroughly.



The parts are now sent into the press, where heat and pressure will form and adhere the vinyl to the substrate.



Parts are now hand trimmed to remove excess vinyl, placed with the order, and sent to packaging.

[Check Out How
They're Made!
Click Here](#)

[Check Out Our Video!
Click Here](#)



If necessary, the products are sent to buildup. Here buildup (drop edge) is applied. CNC routed buildup is glued then pin-nailed in place.





ADVANTAGES:

- ✓ **Quicker** black tank cleaning process.
- ✓ **Easier** method with no additional equipment needed.
- ✓ **Cleaner** than dumping water buckets or pulling a hose through your camper.

3 easy steps!

1. Connect the hose to your black tank flush port
2. Open your black tank evacuation valve
3. Turn on the water.

[Check Out Our Video! Click Here](#)



*Traditional black tank cleaning methods require **more equipment, take longer and are messy***



You're going to need a long hose!



You have to drag it through your camper to the bathroom.



Fight the hose and cleaning attachment down the toilet.



Hoping the tank is getting cleaned properly as you twist and turn the hose.



What a mess! Now what?



Getting the dirty hose back out of your trailer. Yikes!

[Back To Table of Contents. Click Here](#)



Fully Integrated into our
NXG Hucked Frame

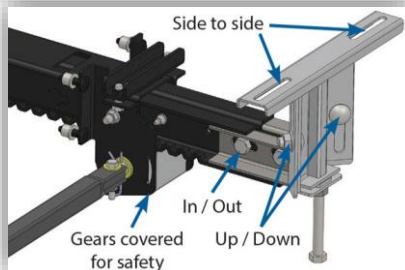
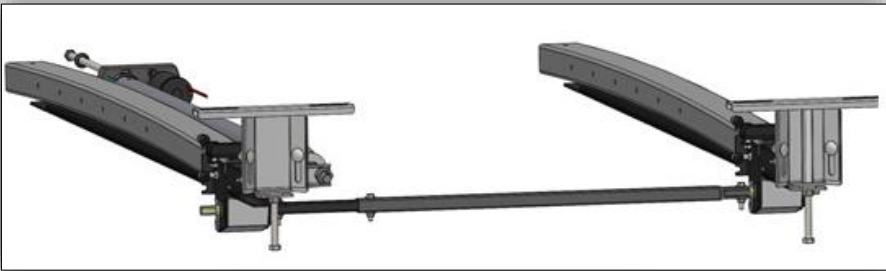
Key Benefits:

- ✓ Manufactured with HSLA – **High Strength Low Alloy Prime Steel** with specifically controlled properties.
- ✓ **CNC controlled rail fabrication eliminated inconsistency** of frame components, including spring axle hanger placement.
- ✓ Mechanically and CNC applied to achieve the desired **positive camber, specific to each floorplan**
- ✓ Component parts are **painted separately, then assembled**.
- ✓ **Manual welding is minimized**. Common components are **robotically welded for consistent quality**.
- ✓ All fastened components are joined with Huck® fasteners. **Huck® fasteners provide consistent clamp load**
- ✓ Frame failures due to sub-standard steel.
- ✓ Inconsistent placement of frame component parts.
- ✓ Uneven main rails – varying camber and

Eliminates!

CATALINA

LEGACY EDITION



Through Frame Slide Out

NXG FRAME

Description

BAL has set the new standard in slide-out technology with the award winning 'NXG SLIDE' rack drive slide-out. The NXG SLIDE system provides an unmatched level of durability and precision that was not available in older generations of slide-out mechanisms. Due to the systems rigidity and tightness, a user should experience years of trouble-free performance. All components of the NXG SLIDE mechanism are individually coated with highly effective corrosion-resistant e-coat or plating for extended life of the slide-out drive. Required maintenance is limited to periodic cleaning and lubrication of the main drive arms of the system. U.S. patent pending.

Key Features:

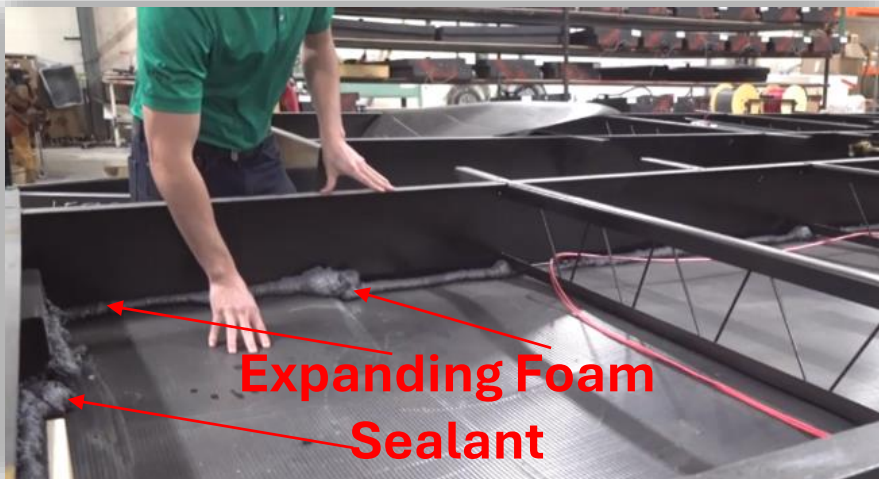
- ✓ **Arched Design** – Strong, tighter, and more durable design that helps hold the room against the trailers side wall.
- ✓ **Rack and Pinion Drive System** – Simple and reliable system with a single motor and easy manual override.
- ✓ **More Space!** – Rack and pinion slide systems offer more head room and more depth than other slide systems on the market today.
- ✓ **Slide Room Supported by Frame** – The through frame design means the slide room itself is engineered into the frame for that specific floor plan. This adds support to the slide room and helps take the load off the sidewalls.

[Back To Table of Contents. Click Here](#)

Enclosed & Sealed Underbelly

Key Features:

- ✓ Protects holding tanks, plumbing, and electrical components from the elements and debris when traveling.
- ✓ We use expanding foam sealant to completely seal the underbelly. This creates a “dead air” space for added insulation properties.
- ✓ Traps radiating air from our in-floor heat ducts.
- ✓ Improves tow ability by reducing drag and buffering.



[Check Out Our Video! Click Here](#)



[Back To Table of Contents. Click Here](#)

CATALINA

LEGACY EDITION



Tredit Advantage Program

- ✓ **4 years of roadside assistance coverage.**
- ✓ **24/7 Nationwide roadside assistance.**
- ✓ **Easy to use app for your phone.**

Helps with:

- Tire Changes
- Towing
- Jump Starts
- Gas Delivery
- Car Lockout
- Key Replacement

[Click Below for more information](#)



Aluminum Fender Skirts & Wheels

Aluminum Fender Skirt Benefits:

- ✓ They won't crack at the screw points needing replacement.
- ✓ They won't color fade from sun exposure or road debris.
- ✓ They look sharp and add to the overall high standard look Catalina has become synonymous with.

Aluminum Wheels Benefits:

- ✓ Lengthens the life of the tire with less weight and improved heat dissipation.
- ✓ Lighter weight improves fuel economy, improves the life of the brakes, and helps reduce tread degradation.
- ✓ Improved heat dissipation helps maintain optimal tire pressure, improves fuel economy, and prevents excessive tire wear.
- ✓ Will NOT rust. Maintaining the clean, sporty, look for years to come.



[Back To Table of Contents. Click Here](#)

35,000 BTU Furnace



Dare to Compare!

Very few direct competitors use a
35,000 BTU furnace!

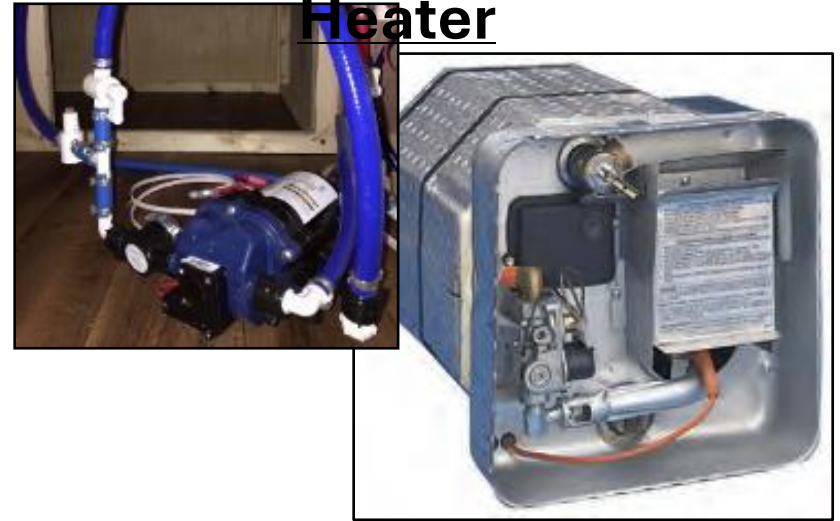
ADVANTAGES:

- ✓ Longer Camping Season
- ✓ More Comfort in Lower Temperatures
- ✓ Less Run Time to Maintain Temperature;
Saves Propane

283RKS floor plan equipped with 30,000 BTU IPO 35,000 due to build code
limitations

Water Heater & Furnace

6 Gal. Gas & Electric Water Heater



ADVANTAGES:

- ✓ **Direct Spark Ignition** allows the user to start the water heater from inside their camper.
- ✓ **Quick Recovery** allows up to 16.2 gallons of water to be heated per hour
- ✓ **Gas and Electric** feature is STANDARD compared to gas only models used by the competition
- ✓ **Water Pump/Winterization Kit** (shown in the picture above) allows the user to easily bypass and winterize their own camper.

[Back to Table of Contents. Click Here](#)

Exterior Added Convenience Features

G20 Tinted Windows



THE BENEFITS:

- ✓ Only 20% of UV light gets through.
- ✓ Keeps the unit cooler.
- ✓ Protects furniture from sun fade.
- ✓ Adds some privacy during the day.

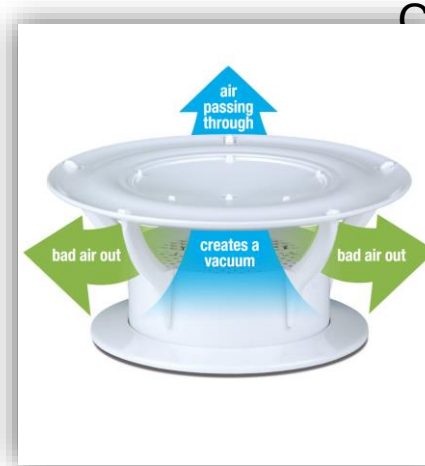
LP Quick Connect



THE BENEFITS:

- ✓ Runs off of the Standard LP Bottles.
- ✓ Convenience for Grilling or Cooking with LP.
- ✓ Quick Connect Hose Attachment.

360 Siphon Roof Vent



THE BENEFITS:

- ✓ Air passing through creates a vacuum.
- ✓ Gases are drawn out.
- ✓ Eliminates Odor.
- ✓ Built-In Screen Keeps Bugs Out.

Battery Disconnect



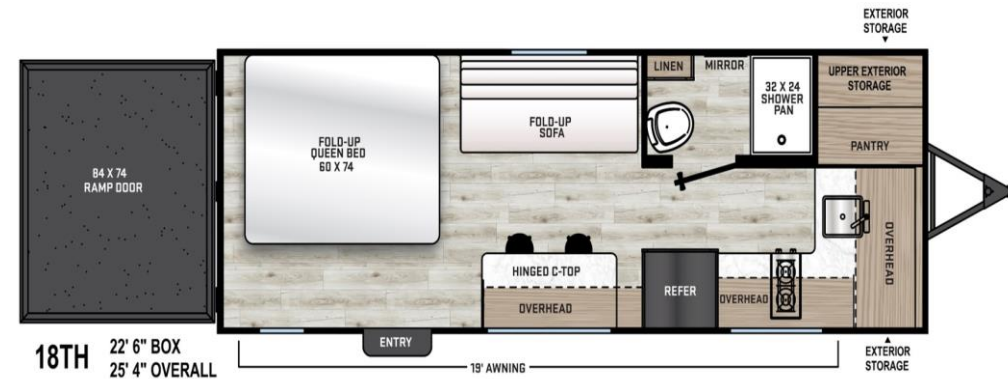
THE BENEFITS:

- ✓ Completely Disconnects the Battery from All Systems.
- ✓ Saves Battery Life.
- ✓ Conveniently Accessible on the A-Frame.

CATALINA



18TH Floorplan Guide



Dry Weight	Hitch Weight	GVWR	Length	Width	Height	Fresh Tank	Grey Tank	Black Tank
4950 lbs.	800 lbs.	8800 lbs.	25' 4"	90"	81"	44 gal.	30 gal.	30 gal.

Key Floorplan Features:

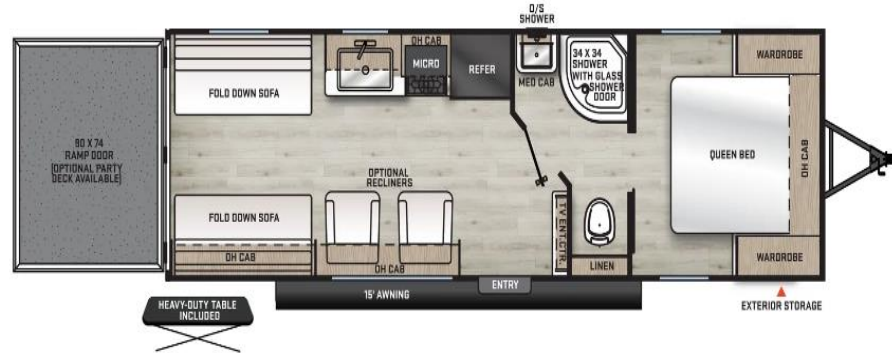
- ✓ Lightweight, Tow Friendly; Under 5000 lbs. Dry weight
- ✓ 25 ft. 4 in. Overall Length
- ✓ Garage Length of 13 ft. 3 in
- ✓ Garage Width of 65 in. Wheel to Wheel, 86 in Wall to Wall
- ✓ 84 x 74 Ramp/Party Patio
- ✓ Fold up Queen Bed along with Folding Sofa; Direct View Entertainment
- ✓ Hinged Countertop w/ Barstools, Facing Picture Window, and Overhead Storage
- ✓ 15 Ft. Toy lock Located at Front of Travel Trailer.
- ✓ Front Kitchen Containing 2 Burner Stove top, Microwave, and 10 cu. Refer
- ✓ Solid Entry Steps Covered By 19 Ft. Power Awning w/ 16 Different Lighting Options
- ✓ Immense Exterior Storage; Pass through with Additional Upper Storage Cubie.



CATALINA



26TH Floorplan Guide

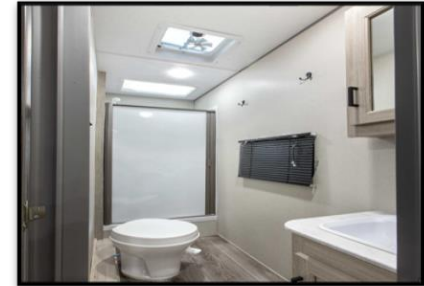


Dry Weight	Hitch Weight	GVWR	Length	Width	Height	Fresh Tank	Grey Tank	Black Tank
5,486 lbs.	957 lbs.	7,900 lbs.	30' 0"	96"	10' 7"	44 gal.	40 gal.	30 gal.

Key Floorplan Features:

- ✓ Under 5,500 lb. Dry Weight
- ✓ 30' Real Length
- ✓ Roll Over Sofa's; Easy to Stow and Creates Extra Sleeping
- ✓ Steel Wheel Well Cover on the Interior
- ✓ Spacious Bathroom with Walk-In Shower and Linen Storage
- ✓ 12 Tie Downs Throughout Trailer
- ✓ 15' Toy Lock Cable with Lock Bolted onto The A-Frame
- ✓ Massive Camp Side Living Room Window
- ✓ 15' Power Awning with Entry Door Coverage
- ✓ **(Optional)** Ramp Patio System
- ✓ **(Optional)** Recliners for Additional Seating

Floorplan Guide



- ✓ Standard Double Over Double Happi-Jac Bunk Lift System
- ✓ Rack and Pinion Super Slide with U-Shaped Dinette and Sofa
- ✓ Double Entry Doors Covered by 21' Power Awning
- ✓ Standard Outside Mini Refer with Griddle
- ✓ Roll Down Screen Wall/Tent Wall; Easy Access and Waterproof
- ✓ 15' Toy Lock Cable with Lock Bolted to A-Frame
- ✓ Walk-Around queen bed
- ✓ Direct View Entertainment with (**Optional**) Recessed Fireplace
- ✓ Rear Entertainment with (**Optional**) Ramp Patio System
- ✓ Two Shelled Pantry Storage Closets

CATALINA



28THS

Floorplan Guide



Dry Weight	Hitch Weight	GVWR	Length	Width	Height	Fresh Tank	Grey Tank	Black Tank
7,226 lbs.	1,126 lbs.	10500 lbs.	33' 10"	96"	12' 0"	98 gal.	40 gal.	30 gal.

Key Floorplan Features:

- ✓ Standard Happi-Jac Bunk Lift System Including Folding Table
- ✓ Small Galley Slide Opening Up the Floor Plan
- ✓ Walk Around King Bed in the Master Bedroom
- ✓ Dove Tail Floor for Easy Toy Entry/Transition
- ✓ Spacious Bathroom with Walk in Shower and Linen Storage
- ✓ 15' Toy Lock Cable with Lock Bolted onto the A-Frame
- ✓ Roll Down Screen Wall/Tent Wall; Easy Access and Waterproof
- ✓ Generator Rack at the A-Frame(Front of Trailer)
- ✓ **(Optional)** Ramp Patio System
- ✓ **(Optional)** Recliner Chairs for Additional Seating

CATALINA



29THS

Floorplan Guide



Dry Weight	Hitch Weight	GVWR	Length	Width	Height	Fresh Tank	Grey Tank	Black Tank
7,082 lbs.	1,206 lbs.	9,800 lbs.	35' 8"	96"	11' 1"	44 gal.	40 gal.	30 gal.

Key Floorplan Features:

- ✓ Under 36 Ft. Real Length
- ✓ 11' Separate Garage Room with True Vapor Lock Door
- ✓ Roll Over Sofa's, Easy to Stow and Creates Extra Sleeping
- ✓ Corner Kitchen with Providing More Countertop Space and Cabinetry Storage
- ✓ Rack and Pinion Super Slide With Dinette Booth and Surrounding Windows
- ✓ Dual Entry to the Master Bedroom with Solid Sliding Doors
- ✓ 13 Tie Downs in Cargo Area
- ✓ 15' Toy Lock Cable with Lock Bolted onto the A-Frame
- ✓ Heavy Duty Folding Table Included
- ✓ **(Optional)** Ramp Patio System